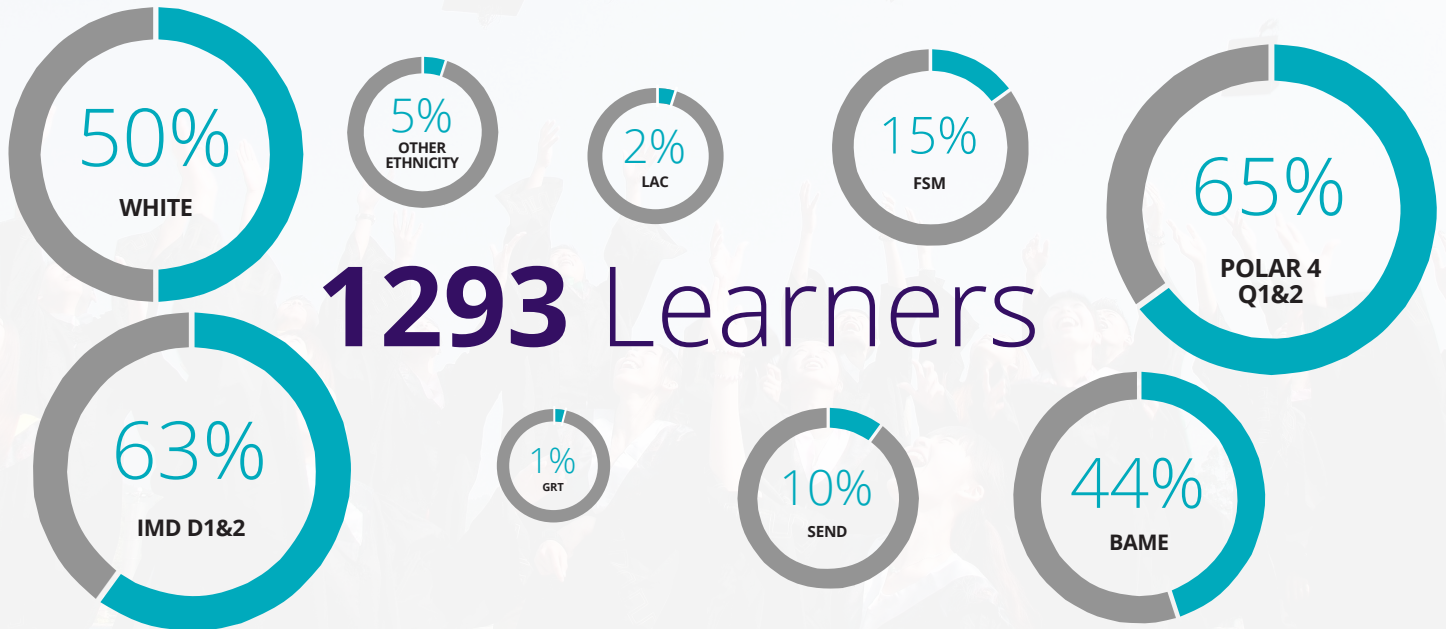


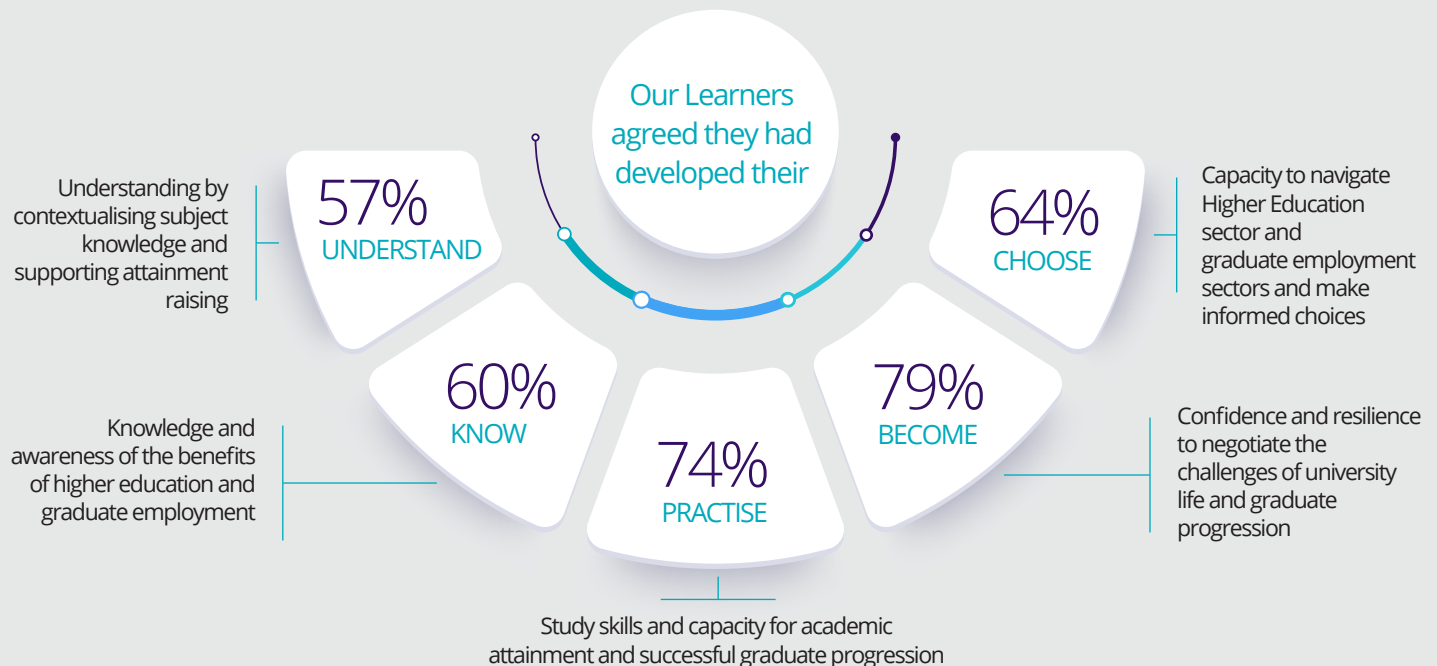
# AIMHIGHER LONDON IMPACT REPORT 2021-22

Supporting Stakeholders to meet their collaborative widening participation targets



*“Knowing more about me and what I can do. I think I can go to uni if I want. I would recommend this to other people. I think it helps. I kind of feel good about myself.”* **Y10 LAC learner**

Raising awareness, attainment and opportunities



*“they all said they could definitely picture themselves there, which is terrific. I was really impressed by the range of subjects offered and hadn’t appreciated what a wide offer they have. I am glad to have widened my knowledge too.”* **Teacher of Y9**

**TYPES OF ACTIVITY:**

**303** | Learners attended Campus Events

**439** | Learners participated in Virtual Sessions

**615** | Learners received Workshops in School

## Progression of our learners to HE:

	APPLIED	MADE OFFERS	ACCEPTED OFFERS
UCAS 2021 Entry - University Progression:	300	97%	97%
To our Partner HEIs:	140	75%	36%
Low Participation Neighbourhoods to HE	165	97%	85%
First Generation HE:	115	91%	100%
BAME:	75	93%	100%

## Providing opportunities, activities & events for staff and key adults to understand better the pathways to HE


 140 | Parents engaged monthly with newsletter


 151 | Staff Attended CPD

 343 | Families engaged in IAG sessions to support progression to HE

*“I feel 100% better about the direction that he could potentially take. I feel very informed... with a view to that not having to be the end of our investigations, which is brilliant”* **Parent of Y8**

## Developing working partnerships with HEI and statutory/non statutory organisations

 **46%**  
of Learners in target schools are LPN 1&2

 on average AHL Schools have  
**25%** FSM

 UNIVERSITY of BRADFORD

 South Thames Colleges Group

 Ravensbourne University London

 Kingston University London

 St Mary's University Twickenham London

 RVC Royal Veterinary College University of London

 University of Roehampton London

 Goldsmiths UNIVERSITY OF LONDON

 MONT ROSE COLLEGE

 THE INSTITUTE

 University College of Osteopathy

 UNIVERSITY OF WEST LONDON The Career University

 CU Coventry University Group

 New College of the Humanities

*“I know that our ambassador got a lot out of it... is helping at our residential currently, and really gets it, is really switched on. And I think the Aimhigher events have given her a lot of experience of it, at direct work with young people and shepherding people along rather than just doing a campus tour.”* **Outreach Manager, St Mary's University**